

# Welcome to St. Bernadette's Nursery



## Nursery New Starters

... Growing Together in Faith, Love & Learning

# Our Nursery Blessing...

My Little One...  
May you always  
Walk in sunshine  
May you never  
Want for more  
May Little Angels  
Rest their wings  
Beside our  
Nursery Door



...Growing together in faith, love and learning

# Welcome to St. Bernadette's Nursery

A very warm welcome to St. Bernadette's!  
We can't wait for you to become a special part of our  
Nursery family.

You will find all of the information you will require  
during your child's Nursery years on our Class  
Webpage.



...Growing together in faith, love and learning



# Starting Nursery



We want to ensure the best possible start for you and your child as we appreciate that starting Nursery is a big step.

## Dropping off and picking up

Nursery children will be dropped off and picked up at the Nursery door.

Morning session – 9am-12pm

Afternoon session – 12pm-3pm

We ask that Parents allow us to dismiss the Morning Session children at 12pm, before the Afternoon Session children start.

...Growing together in faith, love and learning



# The Early Years Foundation Stage

“Whatever life experiences and achievements are to be built on, they need foundations that are rich, broad, varied and robust”.

- The Early Years Foundation Stage Curriculum gives a guidance on what is expected of children from Birth to the end of their Reception year.
- It is broken down into different age categories, and these are used to help us track each child's level of development.
- To access an enriched, broad and balanced curriculum, we highly recommend that your child attends as close to full time as possible.

...Growing together in faith, love and learning



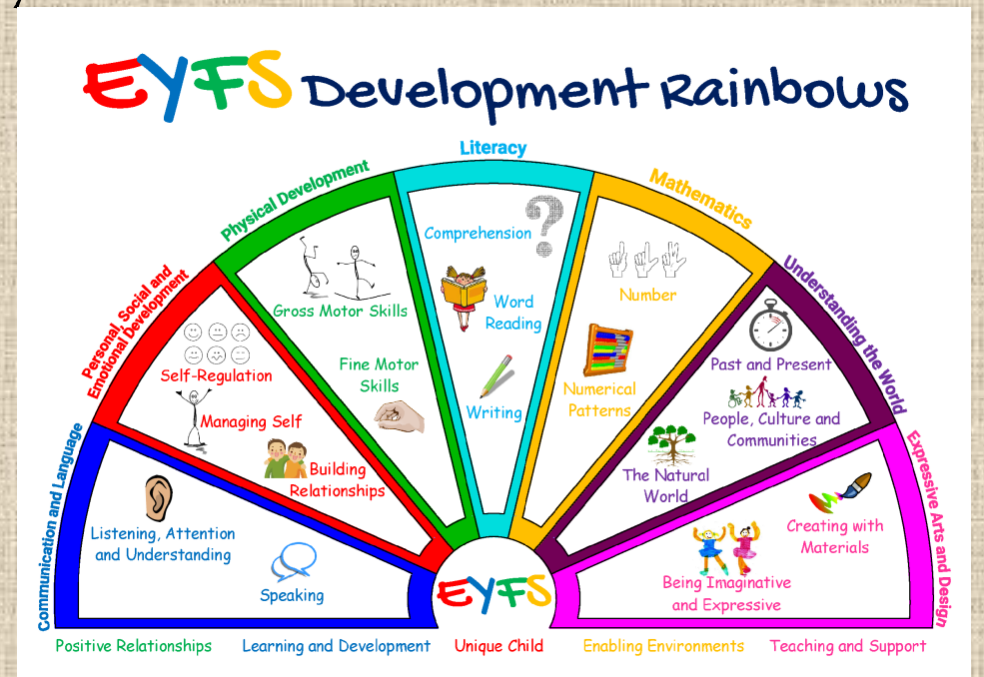
# What is the Foundation Stage?

On Entry to Nursery, children are expected to be working within the 3-4 year old developmental band.

There are seven areas of development within the Early Years, these are:

In Nursery, children should mostly develop the 3 Prime areas first:

- Communication and Language
- Personal, Social and Emotional Development.
- Physical Development



...Growing together in faith, love and learning

# What can you do to help your child as they start at St Bernadette's?

We encourage the children to become independent from when they first start at St. Bernadette's.

We do expect children to be toilet trained before they attend Nursery, but we can assist with this stage of development.

- Can they go to the toilet by themselves? Can they wash and dry their hands?
- Can they take their coat, jumper & shoes on & off?
- Can they drink from a small plastic glass?
- Can they use a spoon?



...Growing together in faith, love and learning

# Daily Routines

- Welcome and enter the classroom.
- Put our belongings away.
- Register and prayers.
- Daily phonics and maths activities.
- Lunch 12pm – 1pm



Throughout the week, we cover our topic activities through different areas of learning both inside and outside, covering all aspects of the EYFS.

Songs and stories everyday!

...Growing together in faith, love and learning

# Your child will get Messy!



...Growing together in faith, love and learning

# There are times that your child will need First Aid....

- Major & Complex needs – You will need to complete a Health Care Plan.
- Allergies – Please inform us of any allergy (even if not likely to be in contact with allergen in Nursery)
- Inhalers – You must send one in to be kept in class.
- Medicines – Please complete a request Form if you need us to give medicine.
- Sun cream must be applied before school & children will only be allowed out if wearing a sunhat.
- Rashes – We will ask you to get these confirmed by a Doctor or Nurse.
- Sickness – Your child Must be kept off for 48 hours from the last episode.
- Accidents – Bump letter – MAJOR BUMPS – You will be informed.
- Nit Night!!!! Please check your child's hair once a week.

...Growing together in faith, love and learning



# Class Dojo



Class Dojo is a communication app that you download onto your phone. It can also be used on a computer through your browser.

Dojo is for you, as parents, to send us photographs or videos, wow/star moments of anything big or small that your child has done or experienced. We share these with your class friends each week.

Important information and messages will be posted on the Class Dojo page, as well as fun photographs from our week!

You can contact us via Dojo, messages will be replied to between 8am and 5pm, Monday to Friday.



# Ages and Stages Questionnaires

In Wigan we have implemented the Greater Manchester Combined Authority 8 Stage Assessment Model for Early Years, which aims to increase the number of children who are ready for school.

Through the introduction of a series of “Ages & Stages” questionnaires the progress of individual children from birth to 6 years old can be assessed and monitored, enabling targeted intervention to be put in place.

This draws upon parents’ expert knowledge and provides reliable, accurate developmental and social-emotional screening. It has been specifically designed to pinpoint developmental progress and catch delays in young children- paving the way for meaningful next steps in learning, intervention, or monitoring.

We will complete this in your child’s initial weeks at Nursery. screening will enable us to detect developmental delays in children – and more importantly enable us to celebrate milestones.



# Lunch Time



Lunchtime facilities are provided for children who attend full time. We ask that children do not bring grapes or any nuts/seeds to Nursery .

Nursery Children who attend either the morning or afternoon session do not need to bring a lunch with them.

At lunch time, Nursery children sit together in the Dinner Area. We will inform you at home time if your child has not eaten their lunch. Otherwise, your child is having a happy lunch.

Do not worry if your child does not eat all of their lunch initially. As they learn our lunchtime routines and grow in confidence you will find that they will eat more 😊

Fruit, milk and water are provided for all children at snack time.

...Growing together in faith, love and learning



# School Uniform

- Your child will be required to bring a school book bag to Nursery.
- You can buy one from Slaters or Impressions in Standish.
- Yellow Polo Shirt with logo
- Grey Trousers or Grey shorts in the Summer (no skirts)
- Bottle Green Sweatshirt or Cardigan with school Logo. Buy a jumper that is big enough for your child to take off & put on by themselves.
- Only Velcro shoes – no laces or buckles!!!
- White or grey socks
- A sun hat for the warmer weather & a warm hat and gloves in the winter.
- A pair of Wellies (bring in on their first day at Nursery) to enable your child to access the Outdoor Learning Environment.
- A warm waterproof coat, as we go outside in all weathers.
  - Please ensure that **EVERYTHING** is clearly labelled with your child's name!!!



...Growing together in faith, love and learning



# And Finally...

If you have any worries or concerns, please call or email the School Office to arrange to speak to the Nursery Manager.

In the morning you can give any messages to the Teacher at the door, such as anyone different who will be picking up your child.

We look forward to working with you and your child throughout their Nursery Journey

Please keep up to date with Nursery information on Class Dojo and web page.

...Growing together in faith, love and learning

